

**DEVELOPER**



Mkt'd By :



**ORANGE KEY REALTORS**

202, II<sup>nd</sup> Floor, Classic Crown, Near Shobhagpura Circle, 100' Road, Udaipur (Raj.)

☎ 9828911779, 9829123094

DESIGN AND MUNICIPAL ARCHITECT



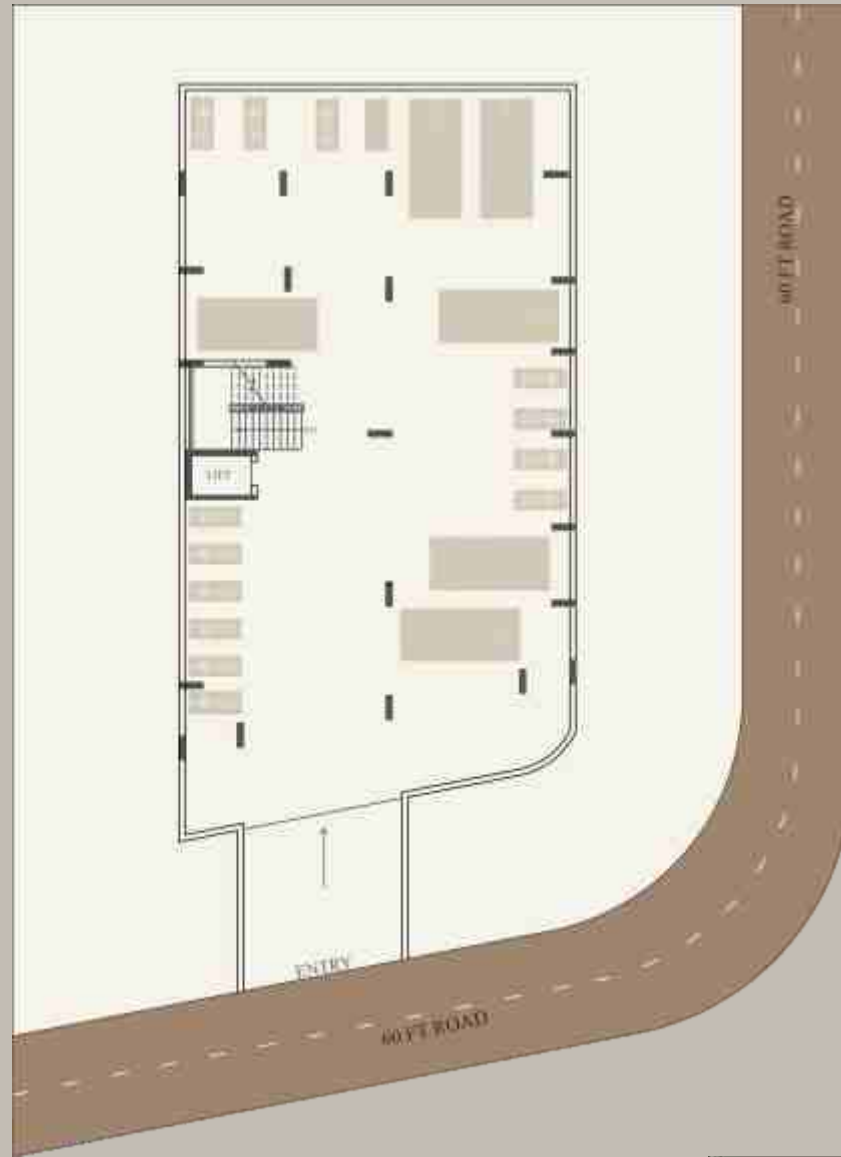
Surrounded by the magnificent Aravali Hills and overlooking the Grand Monsoon Palace and Neemuch Mata Temple, TRUSTROOF REALTY brings to you its maiden venture, TRUSTROOF HEIGHTS.

**31** exclusive adobes built with precision and dedication, situated at one of the most serene and central locations of the city, TRUSTROOF HEIGHTS is aligned with our motto of delivering Quality and Affordability in a single package. At TRUSTROOF REALTY, Trust's in the name.



TRUSTROOF  
HEIGHTS

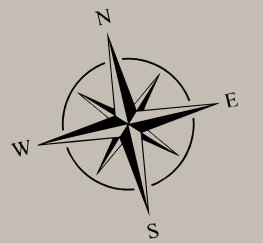




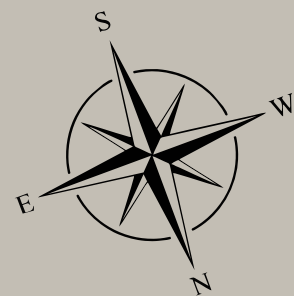
**BASEMENT**



**STILT**



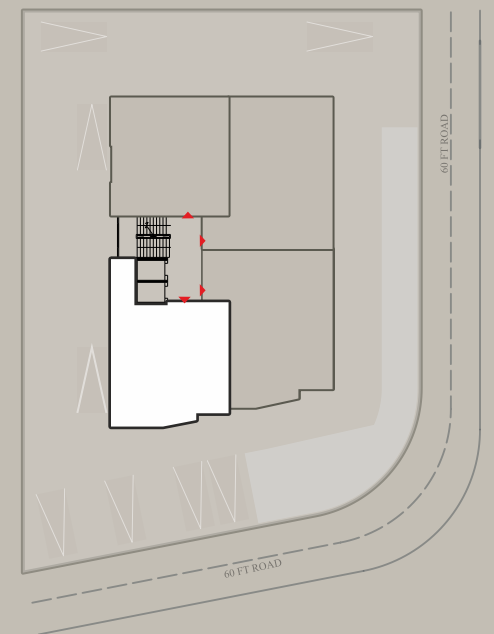
**TYPICAL FLOOR PLAN**

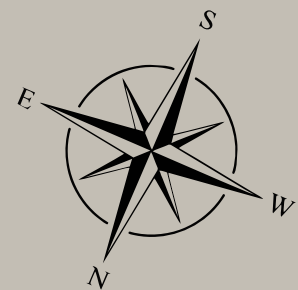


**SUPER BUILT-UP AREA  
1462 SQ.FT**

# 2 BHK

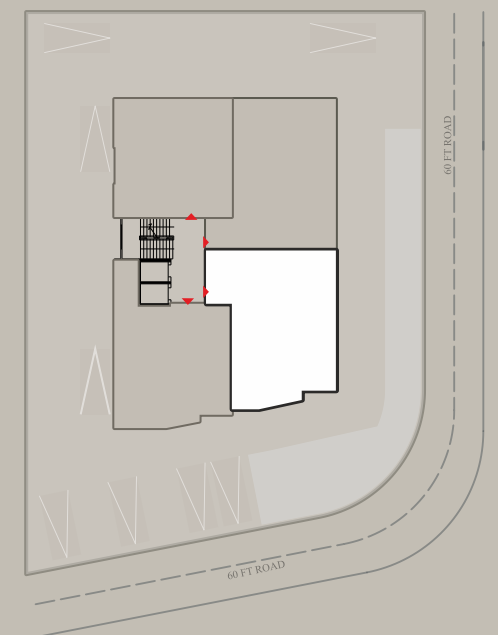
FLAT NO - 1 (TYPE A)





# 3 BHK

FLAT NO - 2 (TYPE A)



SUPER BUILT-UP AREA  
1694 SQ.FT

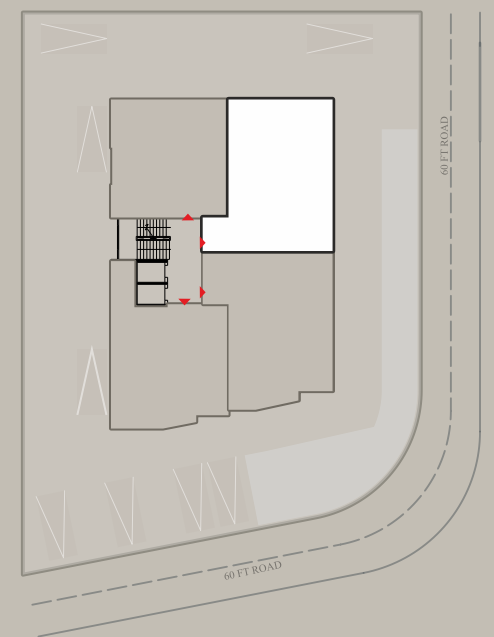


**SUPER BUILT-UP AREA  
1659 SQ.FT**



# 3 BHK

FLAT NO - 3 (TYPE B)

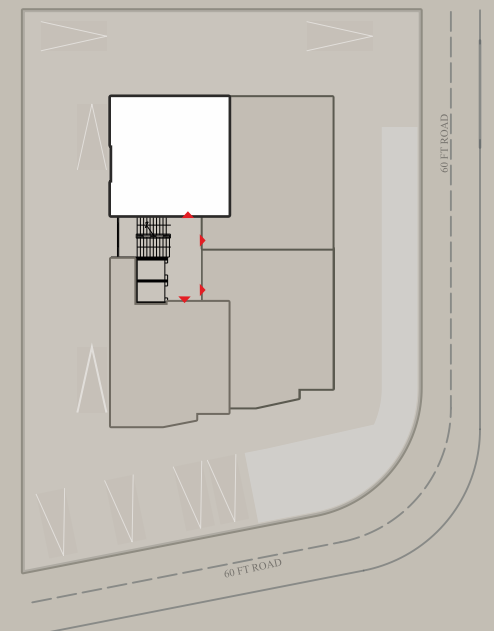




# 2 BHK

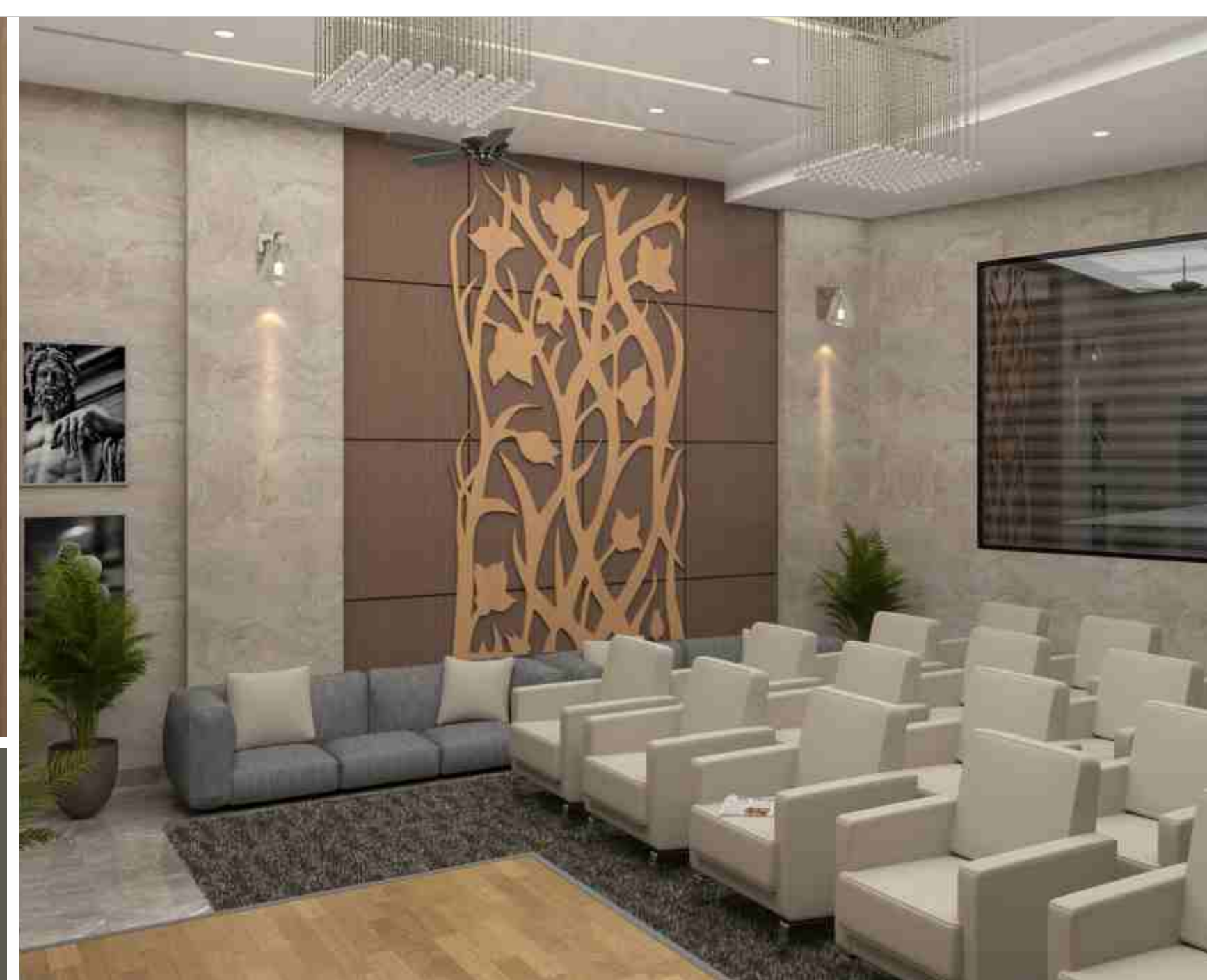
FLAT NO - 4 (TYPE B)

SUPER BUILT-UP AREA  
1346 SQ.FT

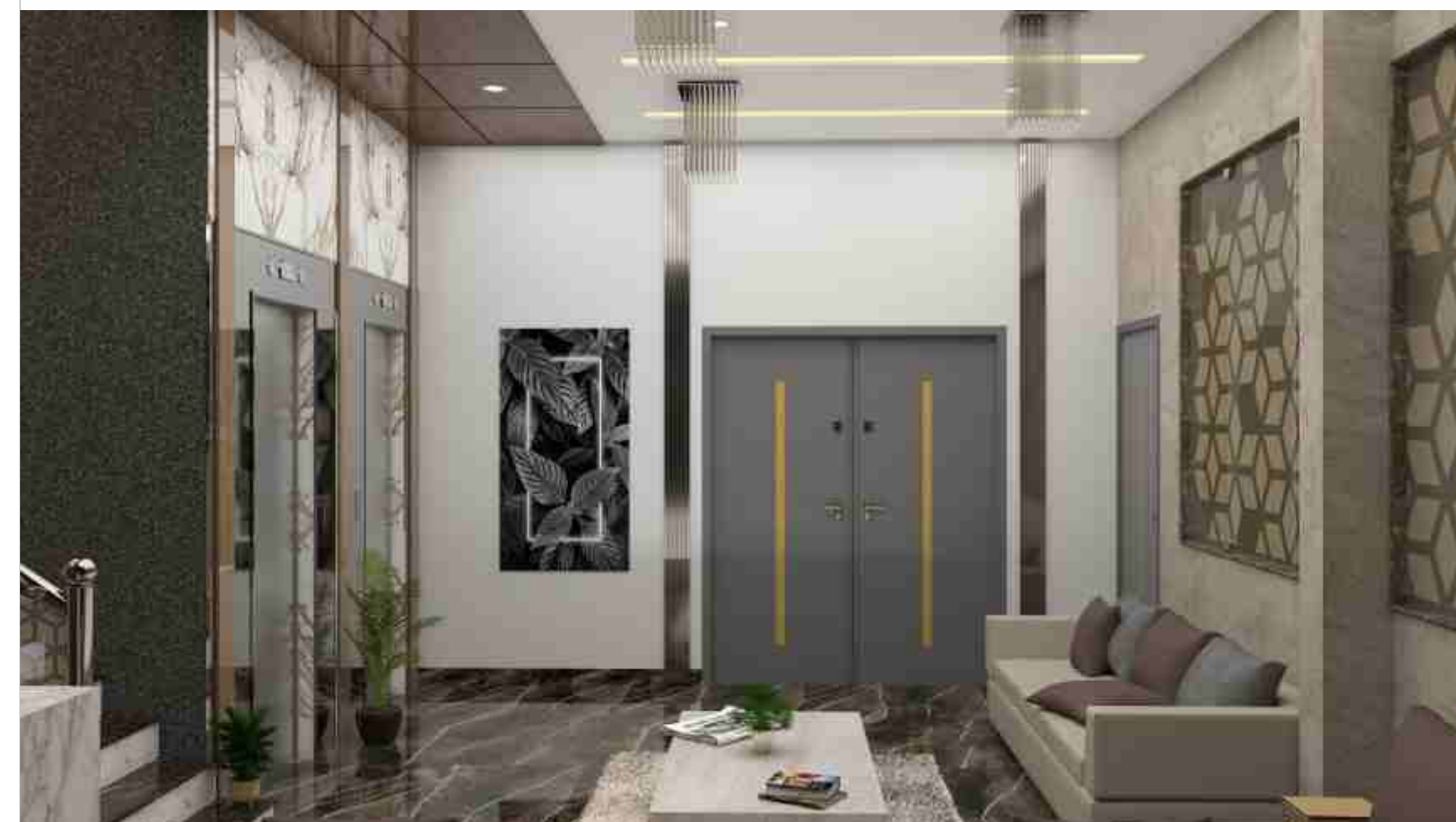




**WELL FURNISHED AND STYLISED  
RECEPTION AREA AND FRONT LOBBY**



**FULLY FURNISHED AND AIR-CONDITIONED MULTIPURPOSE HALL**  
●  
**WELL EQUIPPED GYM**  
●  
**CRAFTED TERRACE GARDEN WITH GAZEBOS AND STREET BENCHES**





# SPECIFICATION

## Parking Facility

- Ample "On Premise" parking space at Basement and Ground levels with dedicated four wheeler parking facility

## Common Facilities

- Dual entrances into the building premises
- Convenient entry from the road to the Basement and a separate, dedicated entry for the Ground level
- Well furnished and stylised Reception Area & Front Lobby
- 2 Auto door elevators  
Brand: Kone, Schindler, Otis or equivalent brands
- Power backup for all common areas, elevator and water supply system
- Rain water harvesting system
- Crafted tree lines and landscaping on Ground level

## Structure

- Earthquake resistant RCC framed structure

## Flooring

- Bedrooms/ Living Room/ Dining Area/ Kitchen: Vitrified tiles  
Brands: Kajaria, Johnson, Qutone or equivalent brands
- Toilets: Branded anti skid vitrified tiles
- Balconies: Branded anti skid vitrified tiles
- Reception Area and Front Lobby: Combination of white marble, vitrified tiles, Italian marble and granite
- Common Lobbies: Granite
- Staircases: Matt finish granite

## Kitchen

- Polished granite platform/ counter
- Superior quality SS sink with drainboard  
Brand: Nirali, Apex, Jaquar or equivalent brands
- Wall tiles (Dado tiles) : Branded vitrified tiles till lintel level

## Doors and windows

- Door architrave (door casing/ chaukhat) in wood
- Main door of standard brands in veneer finish
- Internal doors: Both side laminated flush doors of standard brands
- Windows: Granite frame with anodized aluminium sliding/ openable sections
- Balconies: Anodized aluminium sliding sections and glass with SS railings  
Brands: Saint-Gobain, ModiGuard or equivalent brands
- Water proofing in all Balconies

## Bathrooms/Toilets

- Water proofing in all Bathrooms/Toilets
- Wall tiles (DADO tiles) : Branded vitrified tiles
- Internal PVC pipe fittings  
Brands: Astral, Finolex, Ashirvad or equivalent brands
- Bath fittings and sanitaryware  
Brands: Kohler, Jaquar, CERA, Parryware or equivalent brands
- Bathroom vent designed with pre- installed exhaust fans
- Provision of geyser points in all Bathrooms

## Electrification

- 3 phase and concealed, FR grade copper wirings  
Brands: Finolex, Anchor, KEI, RR Kabel, Polycab or equivalent brands
- Modular plates and switches  
Brands: Legrand, Roma, Anchor, Havells or equivalent brands
- MCB/ELCB protected electric systems for each apartment  
Brands: Havells, Schindler or equivalent brands
- Inverter wiring in each apartment
- Centralised cabling system for DTH (master antenna) and Broadband Internet
- Provision for AC points with copper piping

## Wall finishing

- Internal Walls: Gutai (Sandla)/ Birla putty
- External Walls: Weather sealed textured wall coating/ Birla putty with plastic paint  
Brands: Asian Paints, Heritage, Castle, Nerolac or equivalent brands

## Water supply

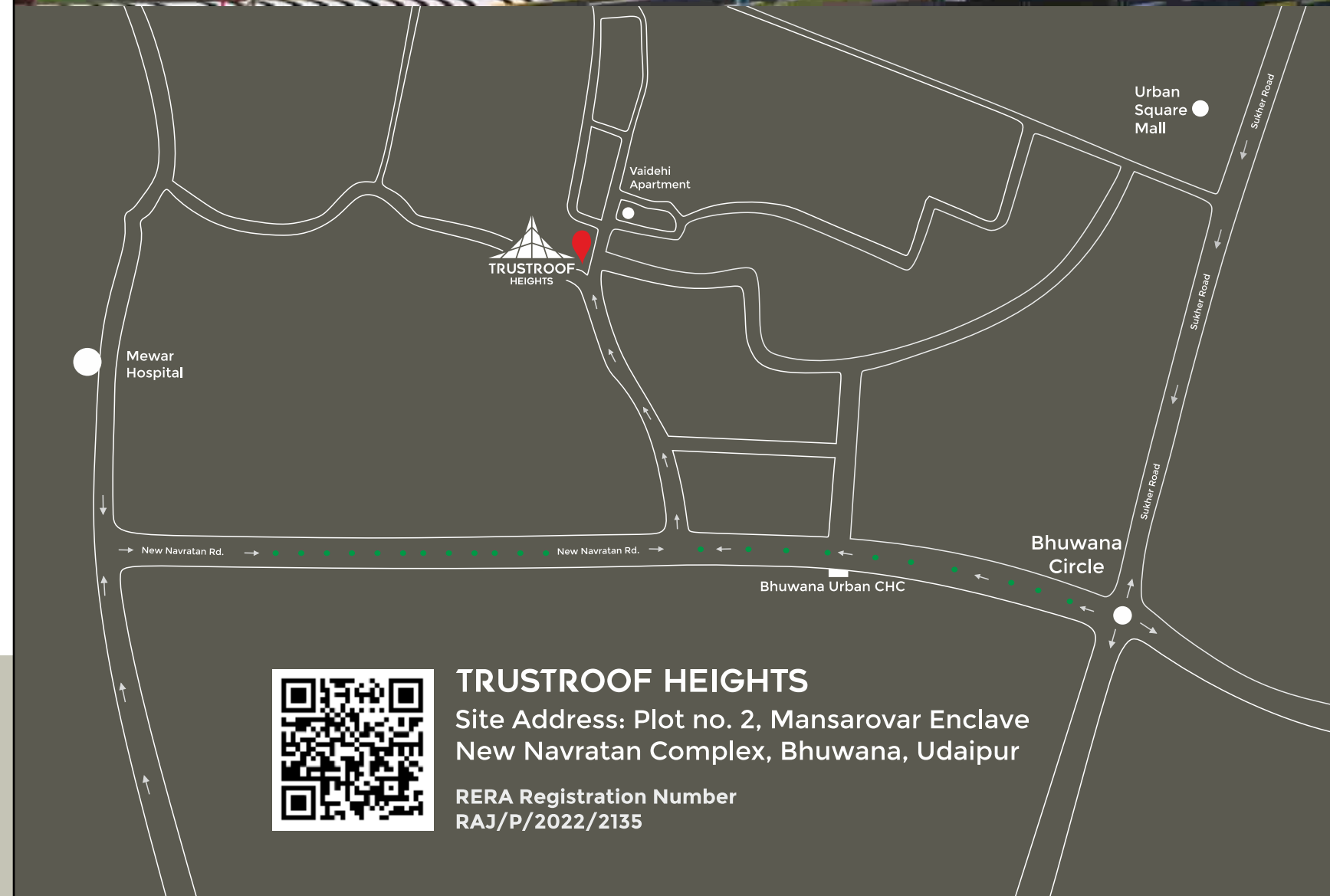
- "On Premise" deep borewell with submersible pump
- Underground and overhead water storage tanks with automation for optimal capacity and convenience
- Central water softening system

## Security and Safety

- Automated gate for Basement entry and manned security cabin on Ground Floor entrance
- CCTV cameras at common areas
- Good quality fire fighting system and fire extinguishers
- Video door phone and Intercom facility for all apartments

## Disclaimer

1. This brochure is purely conceptual and not a legal offering.
2. The information and details provided in this brochure is indicative.
3. The Promoters/Architects reserve the right to add/delete/alter any details/specifications/elevations mentioned herein.
4. The prospective buyers should rely on the plan, specification and amenities referred in their final contract.



## TRUSTROOF HEIGHTS

Site Address: Plot no. 2, Mansarovar Enclave  
New Navratan Complex, Bhuwana, Udaipur

RERA Registration Number  
RAJ/P/2022/2135